

Windows OS support table

JTEKT CORPORATION
Control Engineering Dept.

This table shows the latest versions of our TOYOPUC Series Software and which Windows OS they are supported by as of March 28, 2024.

Symbol Reference

○ : Supported

- : Not supported

Software			Windows 7*2		Windows 10*3		Windows 11*3
Product	Name	The latest version	32-bit version	64-bit version	32-bit version	64-bit version	-
PLC	PCwin *6	Ver.19.13R01	○	○	-	○	-
	PCwin	Ver.20.0R02	-	-	-	○	○
	PCwin2 *6	Ver.3.10R01	○	○	-	○	-
	PCwin2	Ver.4.0R03	-	-	-	○	○
	PCwin-PCk	Ver.1.5R01	○	○	-	○	○
SafetyPLC	PCwin-Safe2	Ver.2.2R06	○	○	-	○	○
	(PCwin-Safe)	Ver.3.2R01	○	○	-	○	○
	(PCwin-Safe-J)	Ver.1.6R02	○	○	-	○	○
	(PCwin-Safe-Plus)	Ver.1.3R03	○	○	-	○	○
	(PCwin-Safe-Nano)	Ver.1.4R02	○	○	-	○	○
Peripheral driver	USB I/F cable(TXY-6266)	Ver.3.00	○	○	-	○	○
Motion	MOWin5	Ver.5.4R01	○	○	-	○	○
	ITwin5	Ver.5.4R01	○	○	-	○	○
	MotionTool	Ver.2.80R02	○	○	-	○	○
	RSCwin	Ver.2.0.30	○	○	-	○	○
Indicator	ScreenWorks-T	Ver.3.17.00	○	○	○	○	○
	ScreenMate5	Ver.6.90Build01	○	○	-	○	○
	ScreenHelper2 2002	Ver.6.00	○*4	-	-	○*4,*5	○*4,*5
	ScreenHelper3 2002	Ver.5.00ce	○*4	-	-	○*4,*5	○*4,*5
	ScreenHelper7	Ver.4.10xp	○*4	-	-	○*4,*5	○*4,*5
	ScreenHelper12	Ver.4.10xp12	○*4	-	-	○*4,*5	○*4,*5
AAA	AAA SetupTool	Ver.2.0.0	○	-	-	○	○
	AAA FTP BackupInstallTool	Ver.2.0.0	-	-	-	○	○
	AAA GraphDisplayForPC	Ver.2.0.0	-	-	-	○	○
	CycleRecorderOfflineTool	Ver.1.1.0	-	-	-	○	○

*1: OSs prior to Windows 2000 / XP / Vista and Windows 8 / 8.1 are not supported.

*2: The supported edition of Windows 7 is only Professional.

*3: The supported edition of Windows 10/Windows11 is Professional, Enterprise.

*4: WindowsOS of ScreenHelper2 2002/ScreenHelper3 2002 /ScreenHelper7/ScreenHelper12 that is supported depends on the version of Excel that is used.

For details, refer to the Screen Helper 2 Operation Manual (t-967n), Screen Helper 3 Operation Manual (t-981n), Screen Helper 7 Operation Manual (t-c06n), and Screen Helper 12 Operation Manual (t-c07n).

*5: 32bit and 64bit versions of Excel are supported, but Microsoft 365 is not supported.(Operation is confirmed by office in Windows installer (MSI) format.)

We plan to respond to Microsoft365 in the future.

*6: When using Windows7 or in Tag mode, use this version.

*7: Tag mode is not supported. Use a Ver.3.10R01 when using in Tag mode.

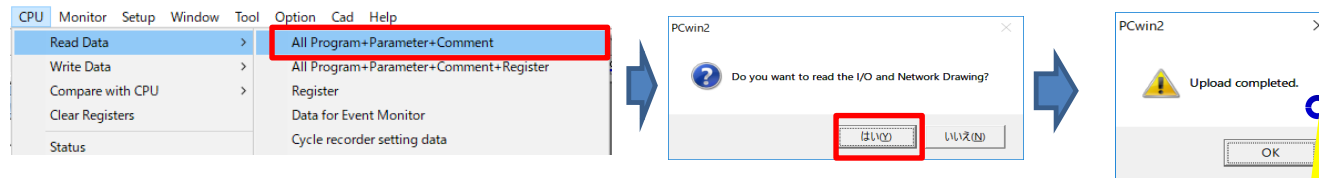
[Attachment]

Requests for Customers Using Windows 10 Pro 2004 or Later PCs

■ Overview

When using TOYOPUC software such as PCwin on a PC equipped with a Windows 10 Pro version 2004 or later OS, IME-related problems of the OS may cause the software to become unresponsive and cause a phenomenon that accepts mouse/key operations.

<One of the procedures to be followed: PCwin2>



The only way to recover a PC is to use the Task Manager to terminate the application.

PCwin2 becomes inoperable as the mouse cursor continues to indicate processing.

■ Requests to customers

Please change the setting to enable compatibility in Microsoft IME setting as follows.

